



SWISSPEARL®

PREMIUM

SWISS QUALITY

FAÇADE SYSTEMS

FOR HIGH-END

ARCHITECTURE



90% of the **raw material** originates from sources in the vicinity of the production plant (10 – 60 km).



60% of the **electrical energy** consists of renewable energy. The CO² emission was reduced by 20% by changing the energy carrier from oil to natural gas in the past 3 years, at the same time eliminating the emission of colloid dust.



Coloration in the cement mass
The cement mass is usually coloured with anorganic colour pigments.



Cement production

20% of the energy required for production consists of alternative fuels (waste material). Since mid-2007 the chrome (IV) content of our cement conforms with the EU regulations 2003/53/EG.

Reinforcement fibres

High quality polyvinylalcohol synthetic organic fibres serve as reinforcement and ensure the required solidity and longevity of the product.

Cellulose

This additional natural fibre ensures a smooth production process. Share is lower than 6% to ensure an optimal panel stability.



Primary production

The raw material processing cycle is closed, i.e. edge cuttings and imperfect sheets return to the material cycle immediately after dissolving in water.

Within the factory, panels are only transported by electric lifting trucks, - i.e. no colloid dust.

Curing

The panels are temporarily stored in conditioning premises for 4 weeks for hardening and drying.

This slow, natural curing of the base sheets contributes to the high quality of the cement core.

Coating

The coating material consists of high quality pure acrylate. It contains neither solvents or any metallic components.

With the use of the curtain technology, the waste of coating material is reduced from 30 to 2 % as compared to spraying technology.

The panels are also coated on the back in order to minimize deformation.



Palletising

The company specific optimisation programme determines the best possible yield of the basic panels to avoid waste of material. If requested, the panels are palletised in the order needed for assembly to avoid waste of time on the job site.

The cut and drilled panels are dispatched ready for assembly, which allows quick and precise installation with-out any waste of material on the building site, ensuring economical and ecological conditions.

Transport

The panels are stacked on special robust pallets, and various safety measures are taken to protect them against all possible danger during transport in order to ensure that they arrive at the building site just as they left the factory.

Installation

The different layers of the ventilated façade are installed successively. Depending on job site organization, several teams can work at the same time on the assembly of the different elements of the system.

The SWISSPEARL panels supplied ready-to-install allow easy and straightforward progress on the job site.



Photo 2006
of building installed 1978

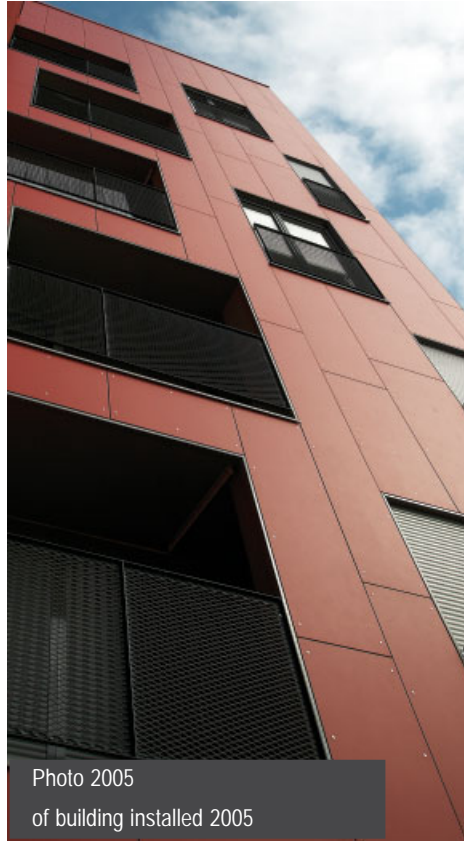
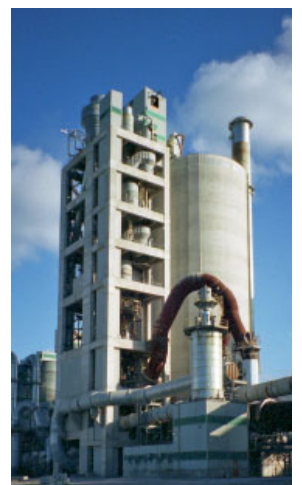


Photo 2005
of building installed 2005



Maintenance

Over 40 years life.
The surface of the panels is not prone to electrostatic charging and resulting soiling.

Dismantling

Since no elements of the system are stuck together, efficient dismantling and appropriate sorting are problem-free. Façades are "deconstructed", and the various parts are recycled or dumped.

Recycling, depository

The manufacturer uses a tried-and-tested process for the utilization of composite cement in cement kilns. Cement composite is a high value raw material for the cement production. Should reutilization in cement kilns not be possible, composite cement can be stored on a inert material depository (according to the European waste catalogue-waste cipher 170101 [concrete]).